



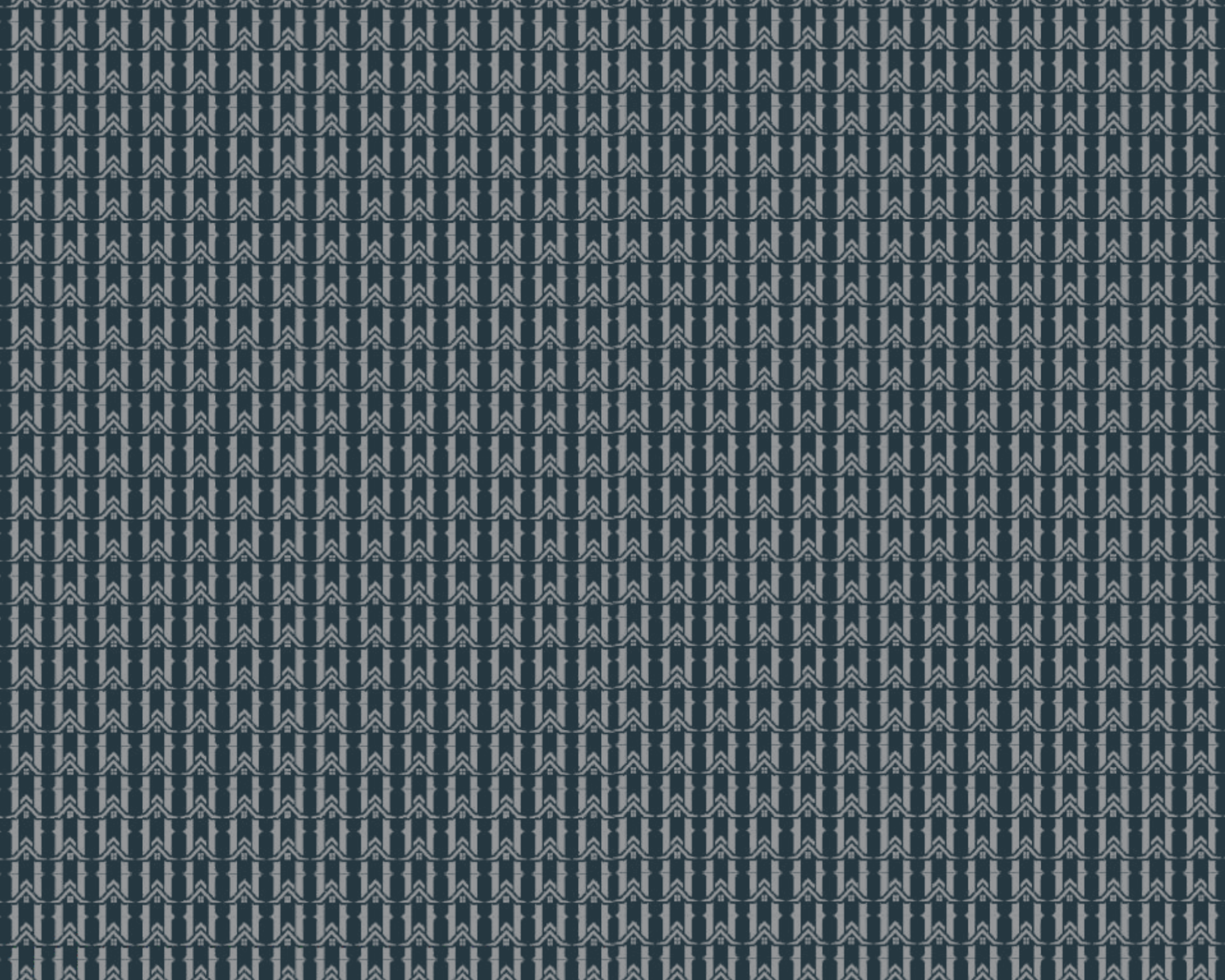
VAASTU HOMES
HEALTH • WEALTH • PROSPERITY

The  **RESORT** *Life*



<http://up-rera.in/projects>
UPRERAPRJ802380/10/2024
ENVYRONS INFRASTRUCTURE -
Collection Account for VAASTU HOMES
Account Number : 924020013286348







LIVE LIFE
RESORT STYLE





Where your dreams find their form and flourish.



*Your home is designed
accordance to Vaastu Shastra*

VAASTU HOMES - A dream which our founder **Dr. NAVRANG KUMAR MITTAL** had when he commenced his career 30 years back as an Architect to create an environment with the blend of ARCHITECTURAL FINESSE & VAASTU SHASTRA to provide an ultra luxury living with abundant positive energy to embark all three elements in your life:

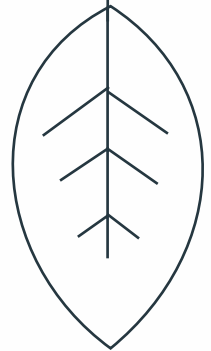
HEALTH - WEALTH - PROSPERITY



VAASTU HOMES

HEALTH • WEALTH • PROSPERITY

As our name suggests, we deeply understand the importance of VAASTU SHASTRA in one's life, so we came up with the blend of CIVIL ARCHITECT & VAASTU SHASTRA to provide you with an environment comprising Happiness, Joy & Positivity all around.





VAASTU HOMES

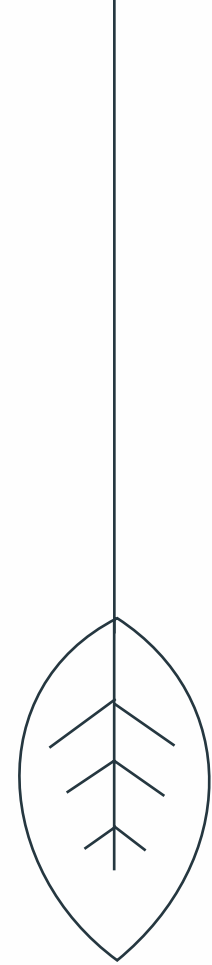
HEALTH • WEALTH • PROSPERITY

**Success finds its home at Siddharth Vihar,
meticulously crafted to offer a lifestyle of unparalleled
abundance, reserved for a select few true leaders.**





**Architectural Wonders
that Redefine Living**





Heightened Openness in Every Space

A generous 3.45-meter (11'-6") floor-to-floor height brings a spacious, airy feel to each apartment.



Skyline Redefined

The tallest tower in Siddharth Vihar, reaching 38 storeys and 140 meters high, offers unmatched views and a new perspective on luxury.



Grand Interiors with Double-Height Spaces

Experience a sense of grandeur in select duplex and simplex units with double-height drawing and dining rooms.





Sustainable Living with Eco-Friendly Construction

Constructed with green building standards and advanced aluminium shuttering technology, ensuring sustainability and quality at every level.



Lavish Outdoor Living

Enjoy expansive balconies with up to 9-foot projections, perfect for relaxing in the fresh air and soaking in breathtaking views.

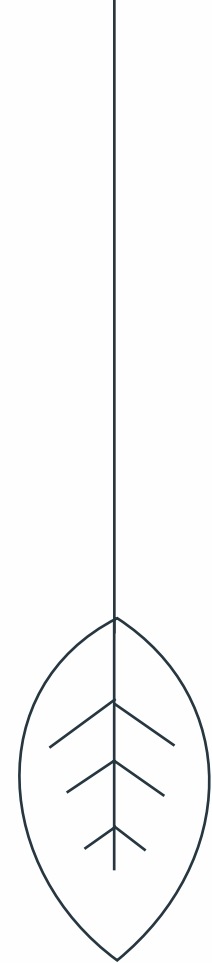


A Regal Welcome Awaits

Step into elegance with a stunning 9-meter-high, triple-height entrance lobby that impresses from the moment you enter.



Luxury Amenities
Inspired by Resort Living





Sky-High Infinity Pool

Dive into luxury at a stunning infinity pool set 140 meters above, offering breathtaking views with every swim.



Rooftop Gym with a View

Elevate your fitness journey in a rooftop gym where panoramic cityscapes inspire every workout.







Relax and Recharge

Indulge in ultimate relaxation with steam and sauna facilities designed to melt away stress.

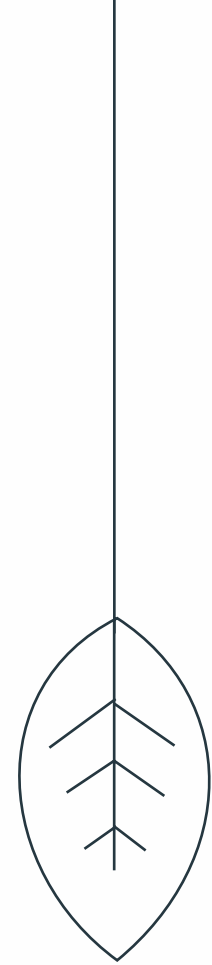


Peaceful Yoga and Meditation Retreat

Find inner peace and rejuvenation in a serene hall dedicated to yoga and meditation.



**Thoughtfully Designed for
Families of All Ages**





Kids' Creche and Daycare

A safe and nurturing daycare center on the ground floor, tailored for families with young children.

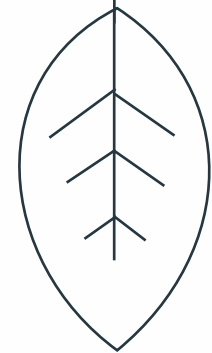


Recreational Spaces for Seniors

Enjoy a fully equipped lifestyle with dedicated spaces, including a library, gym, and activity room for seniors to relax and connect.



**Privacy and Safety
Prioritized for Peace of Mind**





Exclusive Low-Density Living

Crafted for privacy and tranquility, with spacious layouts and open areas for a peaceful lifestyle.

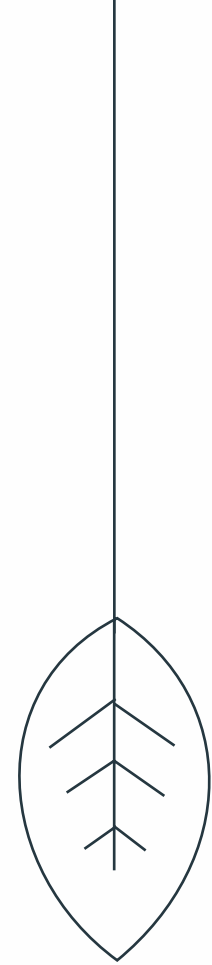


Effortless Access with High-Speed Elevators

Eight high-speed elevators ensure swift, seamless movement, even during the busiest hours.



**MASTER LAYOUTS
AND
FLOOR PLANS**





**LEGEND:
LANDSCAPE ELEMENTS (RESIDENTIAL AREA)**

- 1 ENTRANCE/EXIT GATE COMPLEX
- 2 ARRIVAL COURT
- 3 GOLF CART PARKING
- 4 2.5M WIDE CURVILINEAR PATHWAY, JOGGING TRACK
- 5 FRAGRANCE GARDEN WITH SPECIMEN TREE
- 6 CIRCULAR TOWER DROP-OFF WITH MAJESTIC CANOPY
- 7 FLOATING STEPPING STONES TO ENTRANCE LOBBY
- 8 GRAND CURVILINEAR WATER BODY WITH WATER FOUNTAIN JETS
- 9 DECORATIVE ELEMENTS
- 10 MOUND WITH DENSE PLANTATION
- 11 DOUBLE HEIGHT VERTICAL GARDENS
- 12 GRAND TRIPLE HEIGHT WATER WALL WITH BRANDING
- 13 DOUBLE HEIGHT WAITING AREA
- 14 DOUBLE HEIGHT INDOOR VERTICAL GARDEN WALLS
- 15 OUTDOOR COFFEE SHOP
- 16 SITTING PODS
- 17 MULTIPURPOSE LAWN
- 18 SITTING TIERS
- 19 FEATURE WALL
- 20 SCULPTURE GARDEN
- 21 YOGA/MEDITATION LAWN
- 22 GARDEN PAVILION
- 23 PLUMERIA GARDEN
- 24 BASEMENT CUT-OUT WITH PALM TREES
- 25 CHILDREN'S PLAY AREA
- 26 CURVILINEAR SITTING
- 27 OUTDOOR GYM
- 28 FLORAL GARDEN
- 29 PERIPHERAL PLANTATION

**LEGEND:
LANDSCAPE ELEMENTS (COMMERCIAL AREA)**

- A FLOATING SIGNAGE
- B BOUNDARY WALL
- C GRAND COMMERCIAL PLAZA WITH BARCODE STYLE PAVING
- D MAJESTIC WATER CASCADE WITH SITTING

**LEGEND:
HARD LANDSCAPE:**

- | LEGEND | DESCRIPTION |
|--------|--|
| | ARRIVAL COURT (MOUND) IN NATURAL STONES BY HAND PLANTING |
| | 2.5M WIDE PATHWAY (PAVED) IN NATURAL STONES |
| | WOODEN DECK (TERRACE, BRIDGE) |
| | KIDS PLAY AREA (WOODEN PLANKS, SPRINGRIDE, SLIDING) |
| | WATER BODY |
| | SITTING |
| | SCULPTURE |
| | ENTRY/EXIT POINTS |

**LEGEND:
SOFT LANDSCAPE:**

- | LEGEND | DESCRIPTION |
|--------|----------------------------|
| | PLANTING BEDS |
| | LAWN |
| | ORNAMENTAL FIGUS TREES |
| | ORNAMENTAL SINGAPORE TREES |
| | ORNAMENTAL PALM TREES |



TOWER-AR, LANDSCAPE MASTER PLAN

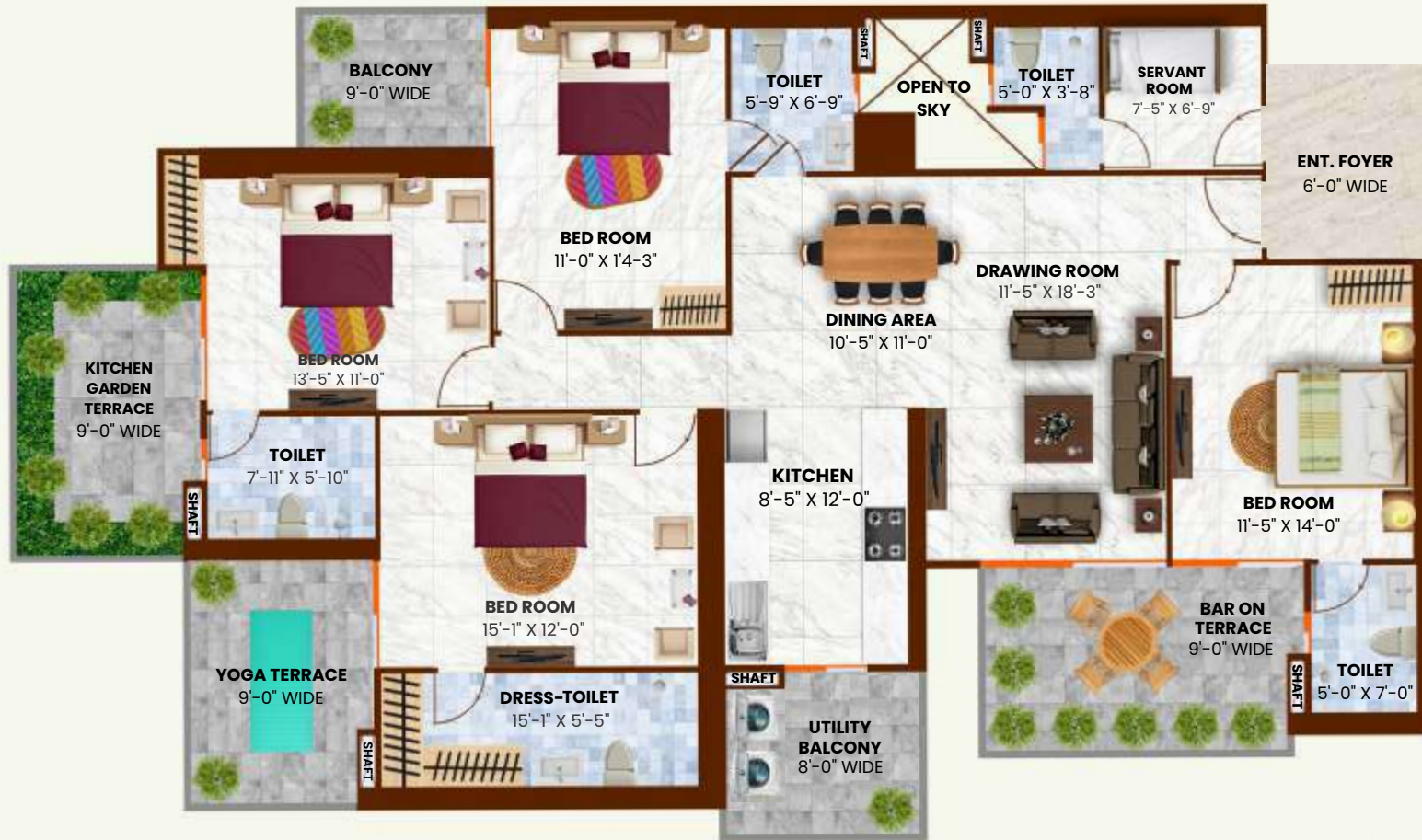
UNIT - 01 (4 BHK)

TOTAL AREA = 3390 SQ FT.

Floor Plan

BUILT UP AREA = 2110.82 SQ FT.

CARPET AREA = 134.97 SQM





UNIT - 02 (6 BHK)

TOTAL AREA = 7990 SQ. FT.

Floor Plan

BUILT UP AREA = 5201.81 SQ. FT.

CARPET AREA = 315.49 SQM.



UNIT - 03 (3 BHK)

TOTAL AREA = 3090 SQ FT.

Floor Plan

BUILT UP AREA = 1973.90 SQ FT.

CARPET AREA = 131.72 SQM.



UNIT - 04 (3 BHK)

TOTAL AREA = 2690 SQ. FT.

Floor Plan

BUILT UP AREA = 1693.50 SQ. FT.

CARPET AREA = 117.84 SQM.



UNIT - 05 (3 BHK)

TOTAL AREA = 2690 SQ. FT.

Floor Plan

BUILT UP AREA = 1681.55 SQ. FT.

CARPET AREA = 117.46 SQM.



UNIT - 06 (3 BHK)

TOTAL AREA = 2590 SQ. FT.

Floor Plan

BUILT UP AREA = 1620.74 SQ. FT.

CARPET AREA = 112.57 SQM.



UNIT - 07(A) (3 BHK)

TOTAL AREA = 3490 SQ. FT.

Floor Plan

BUILT UP AREA = 2161.95 SQ. FT.

CARPET AREA = 140.37 SQM.



UNIT - 07(B) (3 BHK)

TOTAL AREA = 3490 SQ FT.

Floor Plan

BUILT UP AREA = 2111.36 SQ FT.

CARPET AREA = 138.72 SQM.



UNIT - 08 (6 BHK)

TOTAL AREA = 7990 SQ. FT.

Floor Plan

BUILT UP AREA = 4912.58 SQ. FT.

CARPET AREA = 292.41 SQM.



(UPPER DUPLEX)



(LOWER DUPLEX)

UNIT - 09 (4 BHK)

TOTAL AREA = 3390 SQ. FT.

Floor Plan

BUILT UP AREA = 2105.98 SQ. FT.

CARPET AREA = 134.95 SQM.



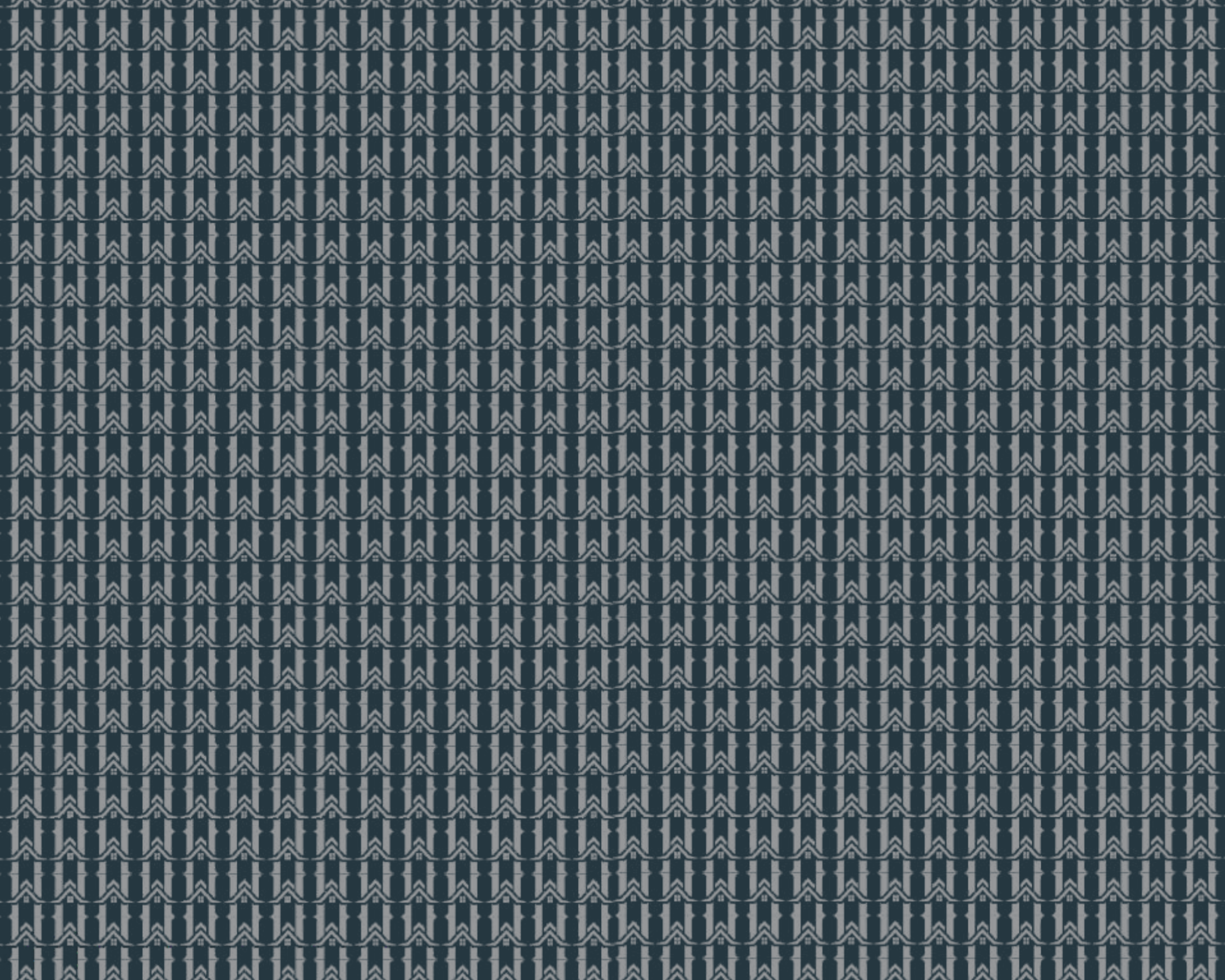


VAASTU HOMES

HEALTH • WEALTH • PROSPERITY

**Vaastu Homes - Where Elegance Meets
Harmony and Every Space Feels Like Home**







VAASTU HOMES

HEALTH • WEALTH • PROSPERITY

LIVE LIFE RESORT STYLE AT
VAASTU HOMES, SIDDHARTH VIHAR

CALL US: +91-9289120070